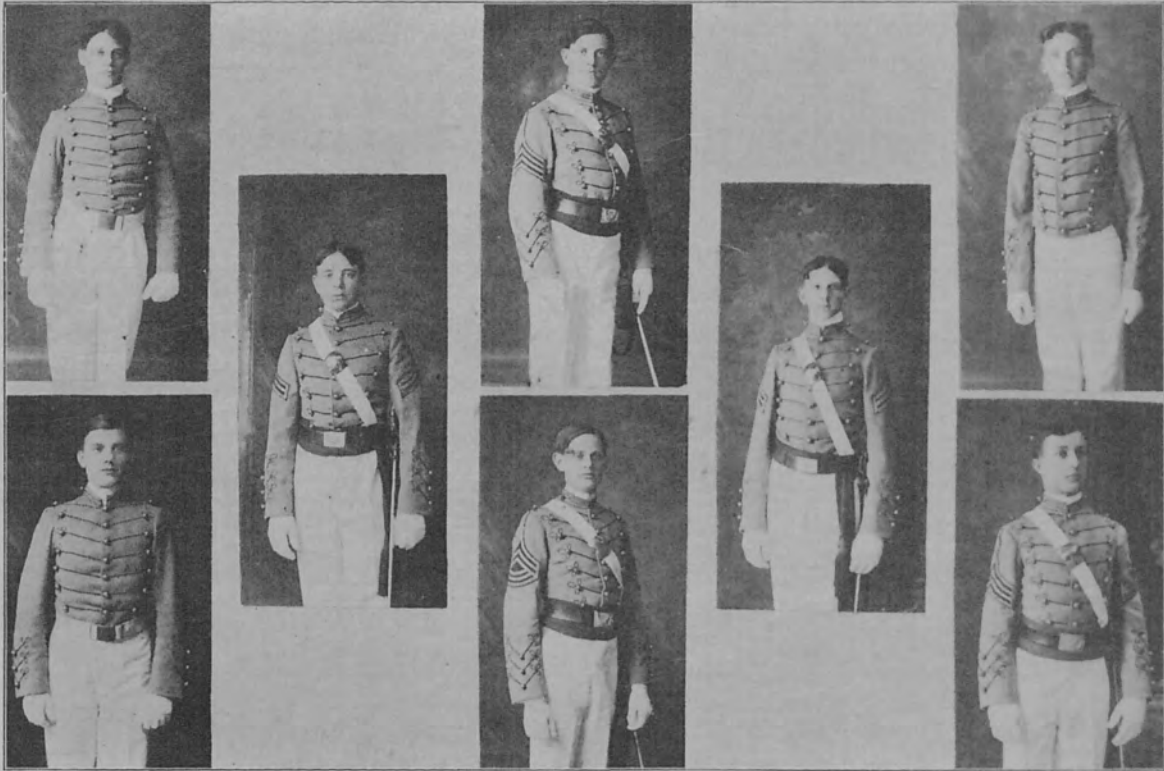


SUPPLEMENT TO  
THE SENTINEL  
HOWE SCHOOL

1903



THE CLASS OF 1903.

SUPPLEMENT TO

# The Sentinel

VOLUME 14 NUMBER 9



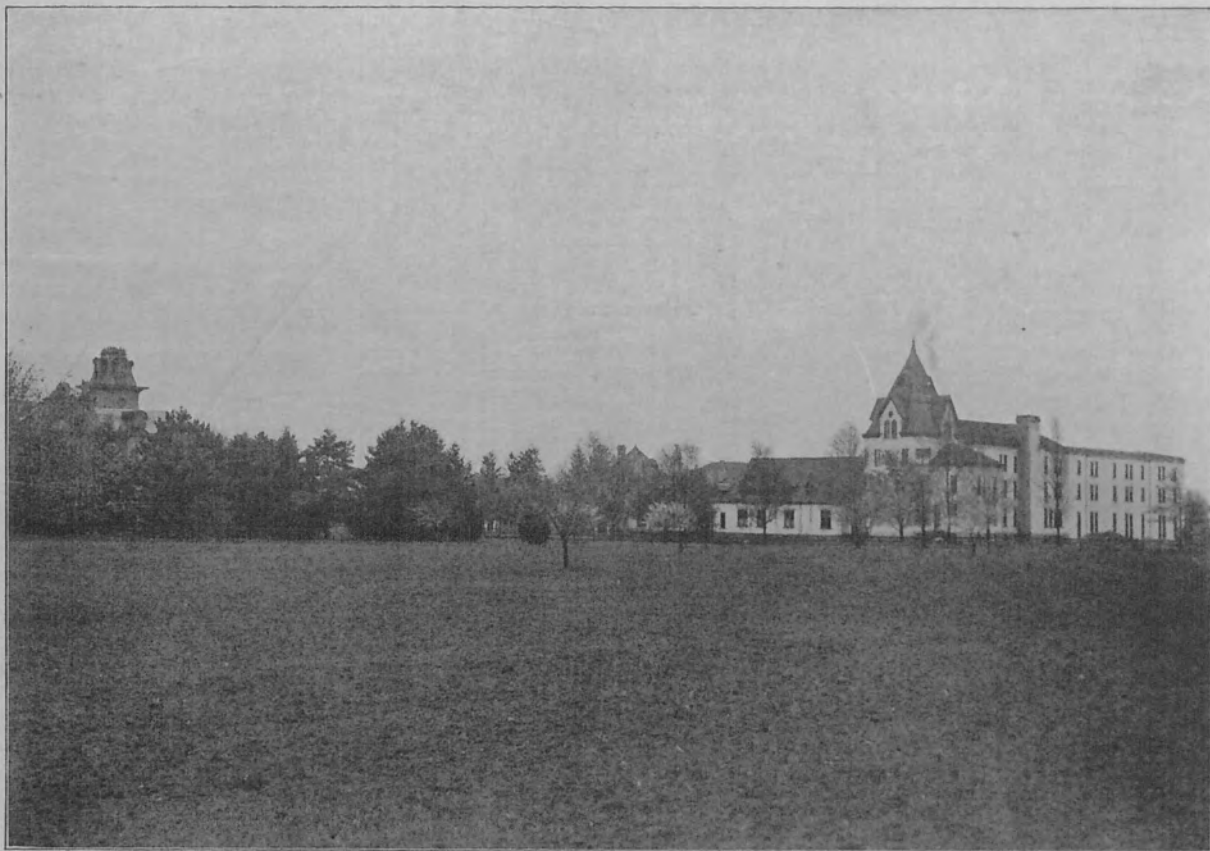
RANDOM VIEWS



NORTHWEST VIEW OF THE NEW DINING ROOM AND CHAPEL.

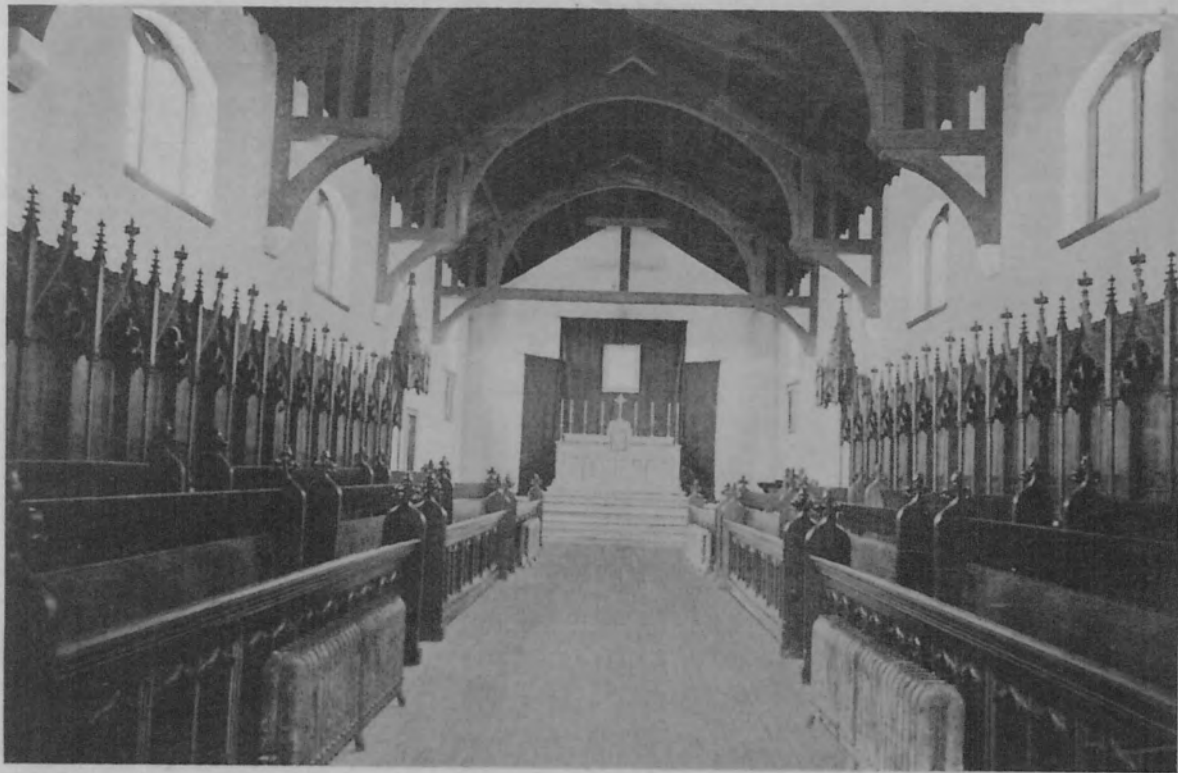


NORTHEAST VIEW OF THE MAIN BUILDING.



NORTHWEST VIEW BEFORE THE ERECTION OF THE NEW BUILDINGS.





AN INTERIOR VIEW OF THE NEW CHAPEL.

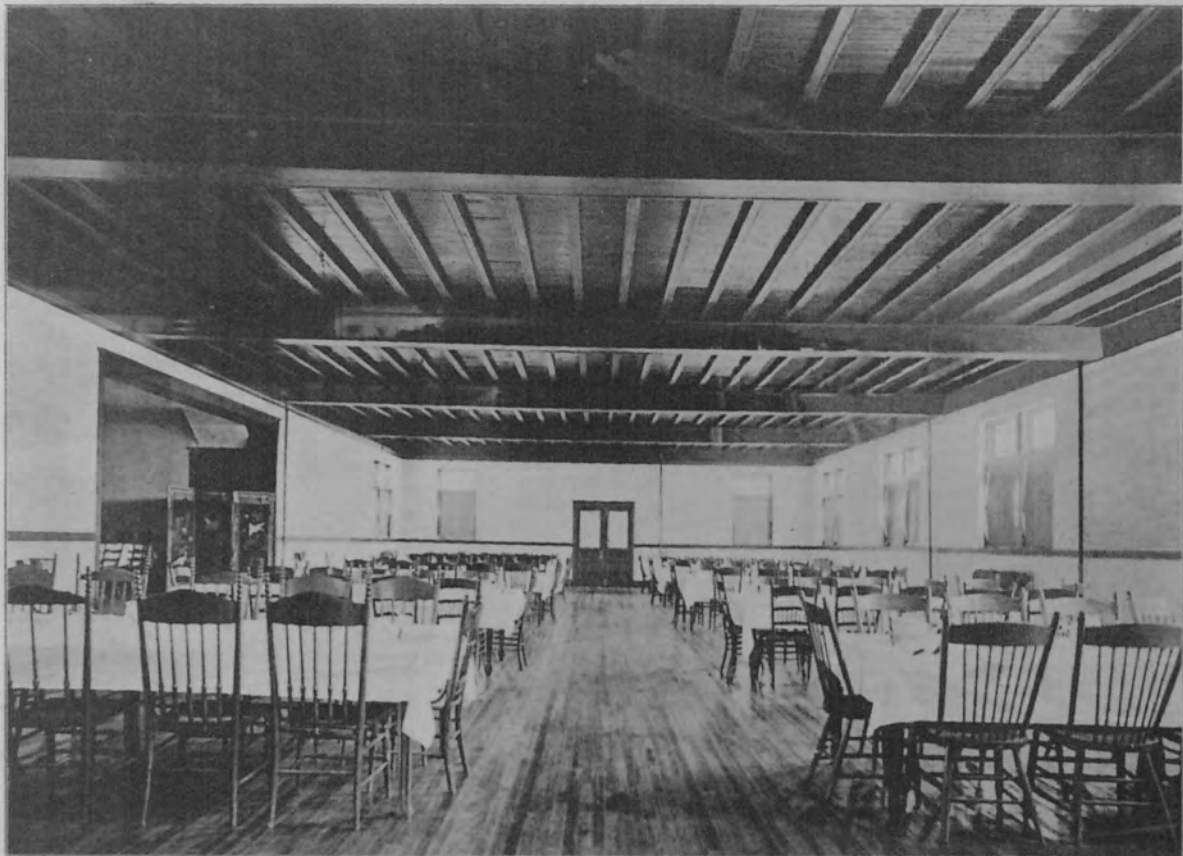
HOWE SCHOOL was opened in 1884 on a foundation left by Hon. John B. Howe who had deceased the year before. It was first known as the Howe Grammar School. Bishop Knickerbacker was the moving spirit in these



CLOISTER IN THE QUADRANGLE.

early days. With the advent of Bishop White, the present Rector assumed charge of the school. Under his able management and with the aid of many generous gifts from Mrs. Howe, Dr. Blake and other interested persons, the school has steadily increased in size and usefulness. Its administration is Christian and its ideals are the highest.



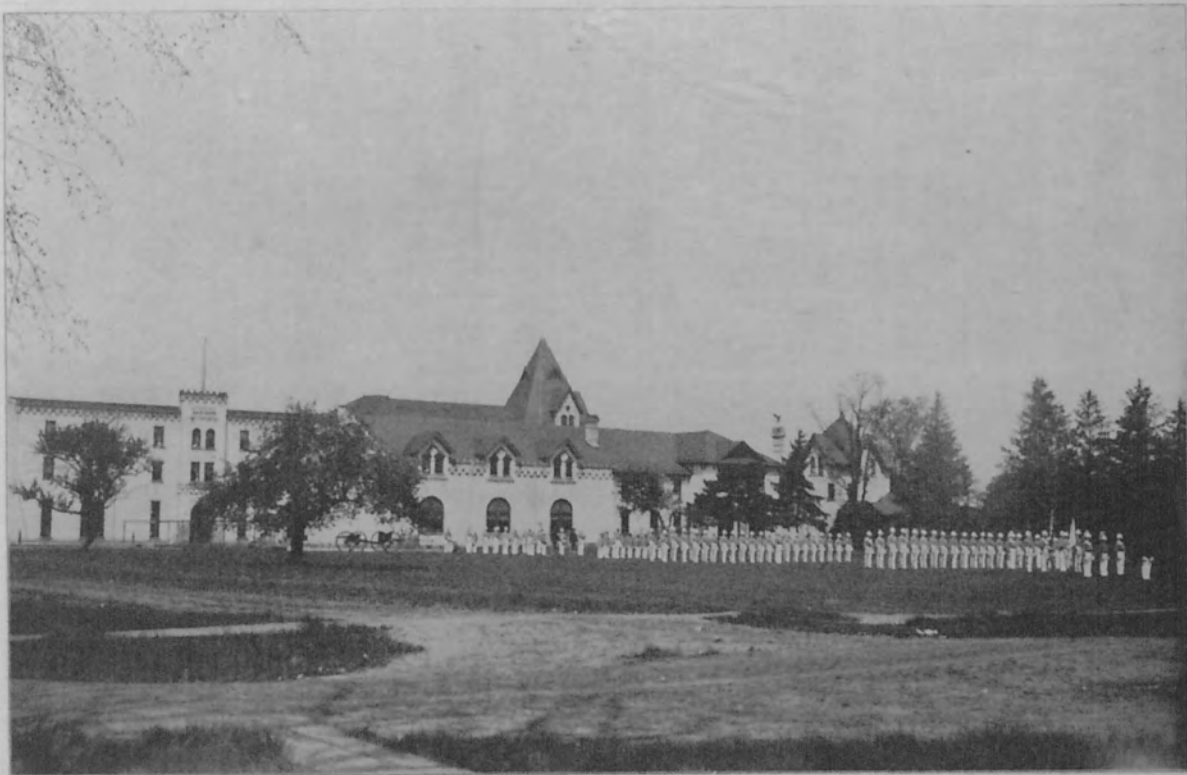


INTERIOR OF NEW DINING ROOM.

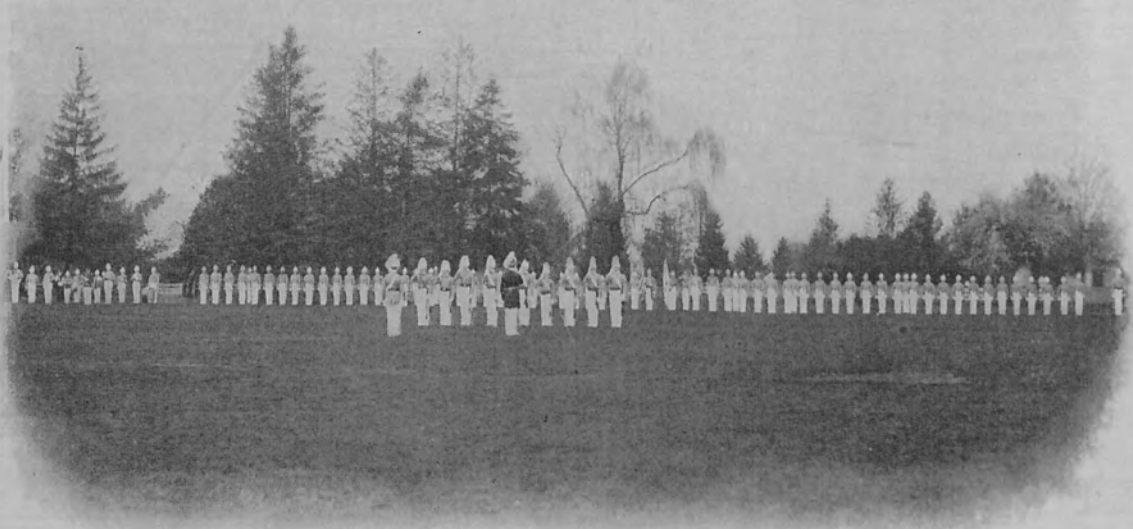
**H**OWE SCHOOL aims to provide for the religious, intellectual and physical culture of its pupils. A boy learns to do right only by learning to love the right. The average student can be fitted for a keen intellectual life only by learning thoroughly every lesson every day. His physical welfare is also ensured by the military drill and complete athletic system.



THE MAIN APPROACH TO THE SCHOOL

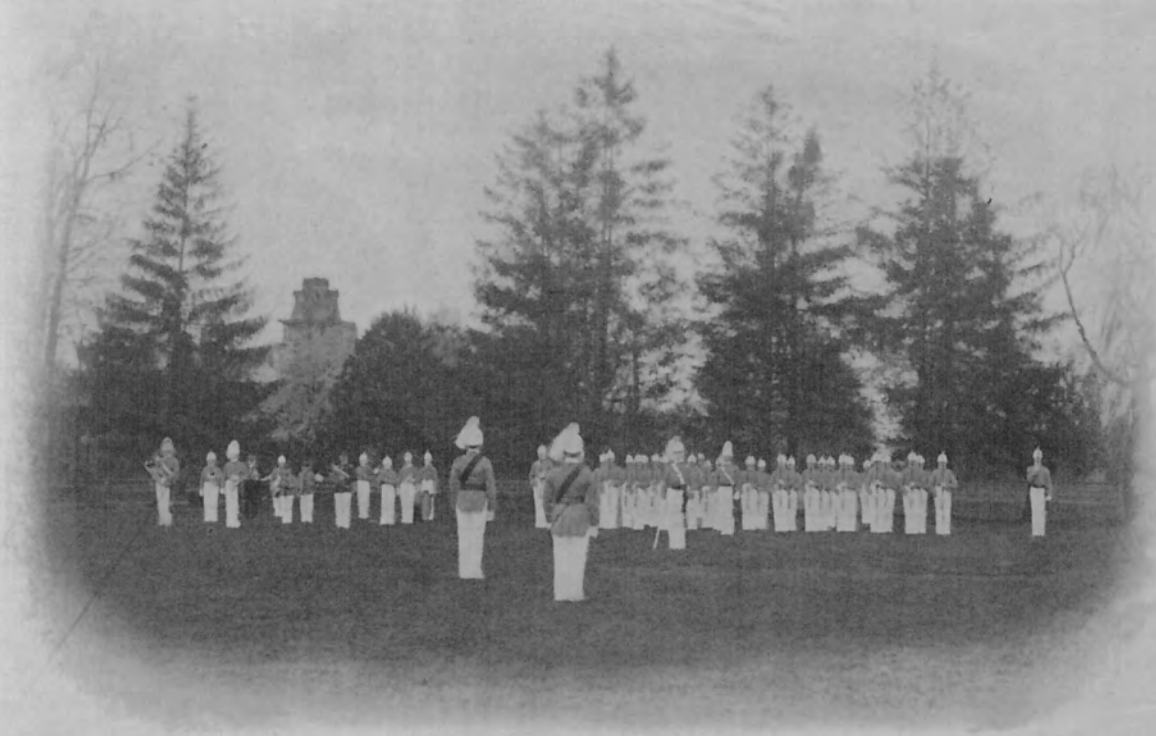


BATTALION REVIEW ON THE EAST CAMPUS.

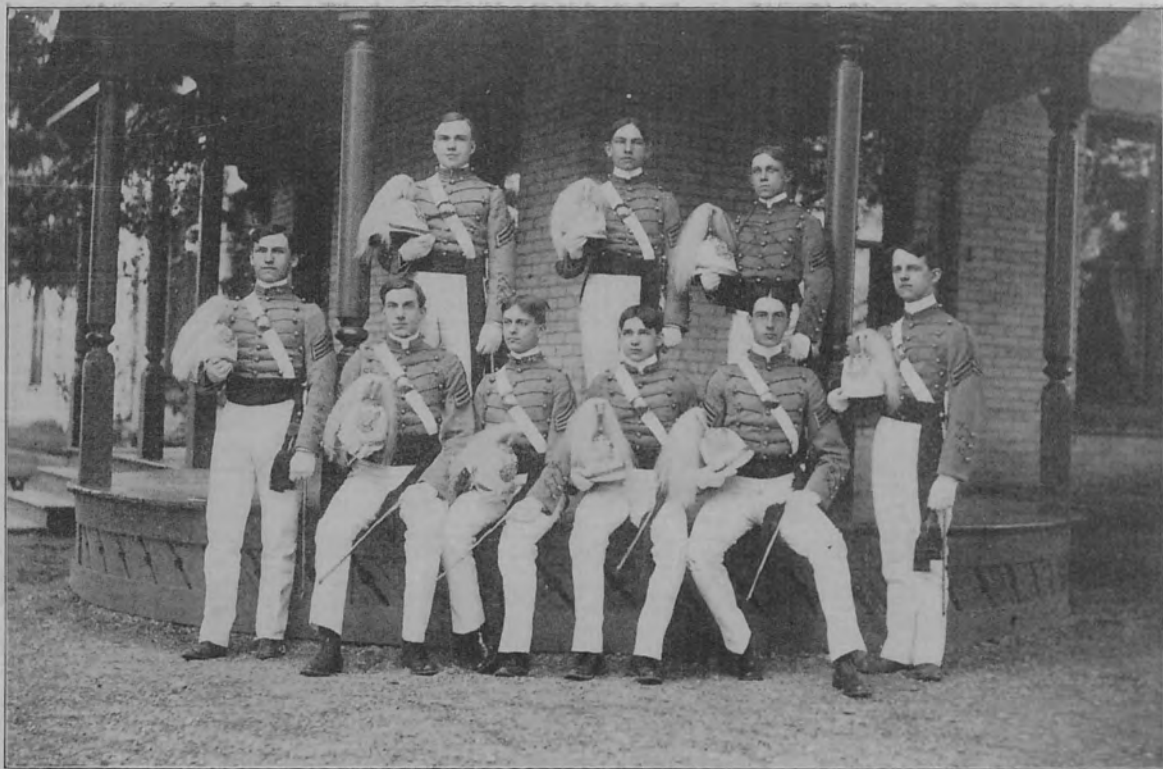


J.

DRESS PARADE.



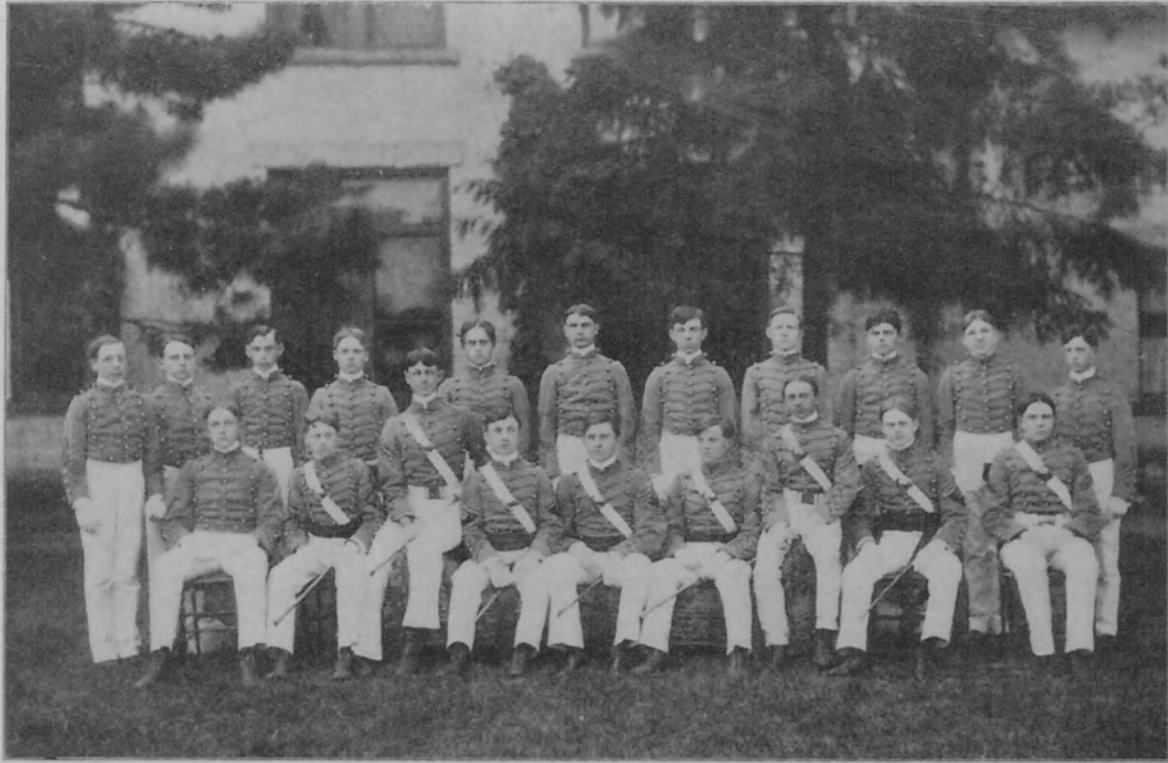
GUARD MOUNT.



COMMISSIONED OFFICERS.

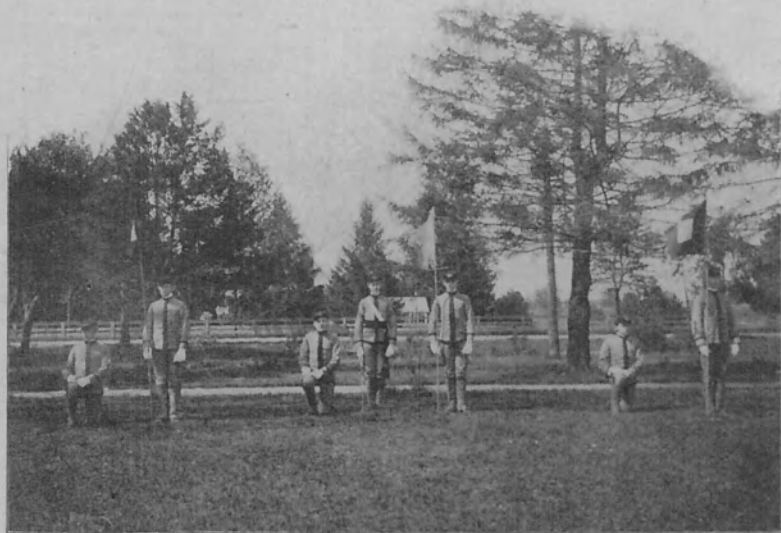
2





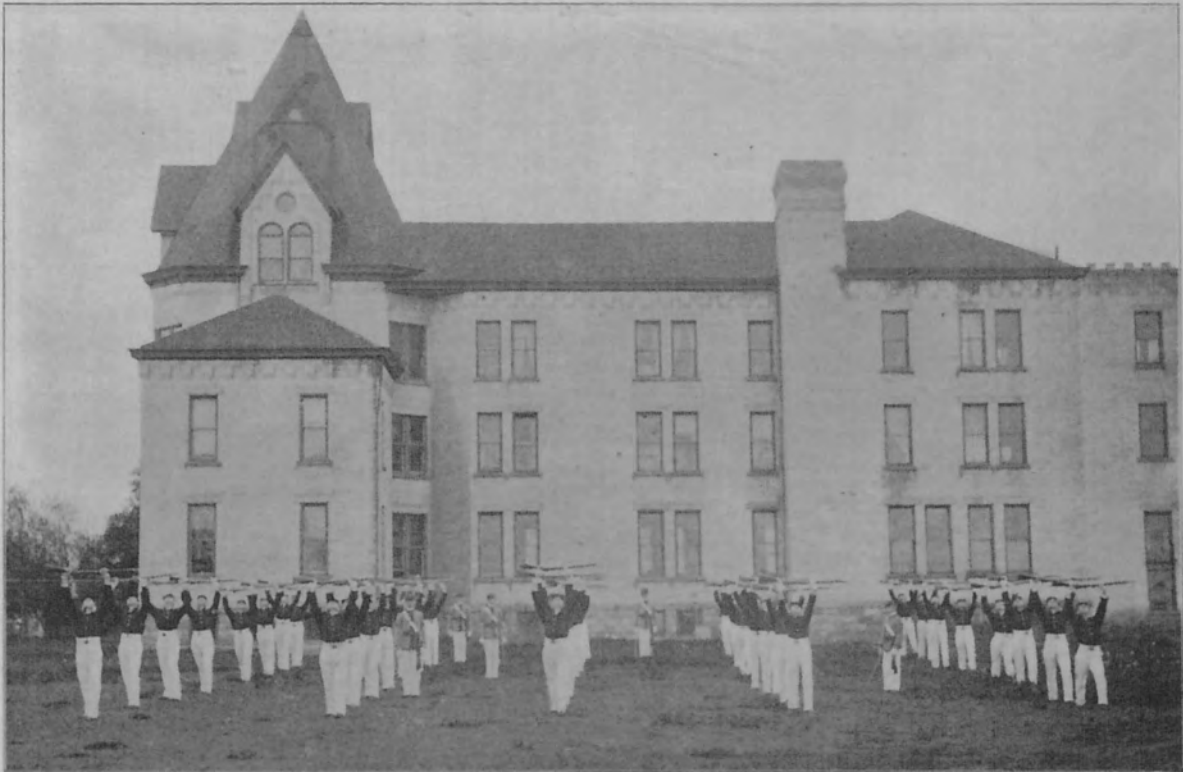
NON-COMMISSIONED OFFICERS.

THE routine of the School is military. But the actual working out of the system finds many modifications which are necessary for the well-being and comfort of cadets.

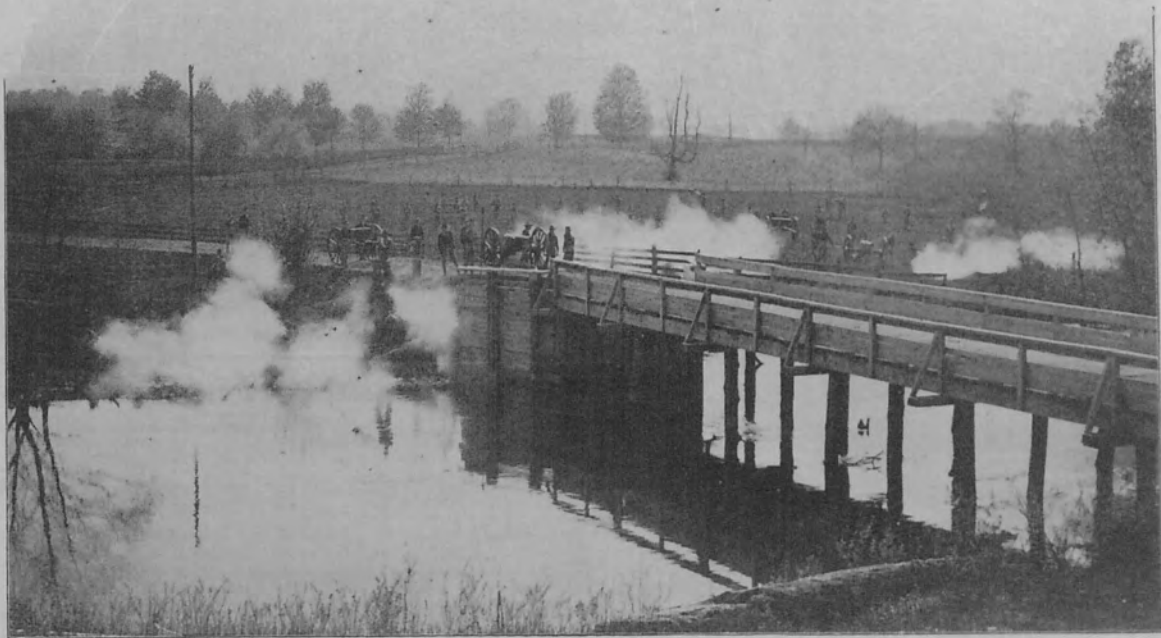


SIGNAL CORPS.

✓



GUN DRILL FROM BUTT'S MANUAL ON THE WEST CAMPUS.



SHAM BATTLE AT THE BRIDGE ACROSS PIGEON RIVER.



ON THE FIRING LINE.

THE military department is added to the school for purposes of physical culture and discipline. But the welfare of the individual is not sacrificed to a system. The military adds to the completeness of the school, but it is not a predominant feature.



DR. FRED WADE  
LATER SCHOOL  
DOCTOR —

**A**THLETICS are thoroughly organized and conducted on the best modern methods.

✦ ✦ ✦

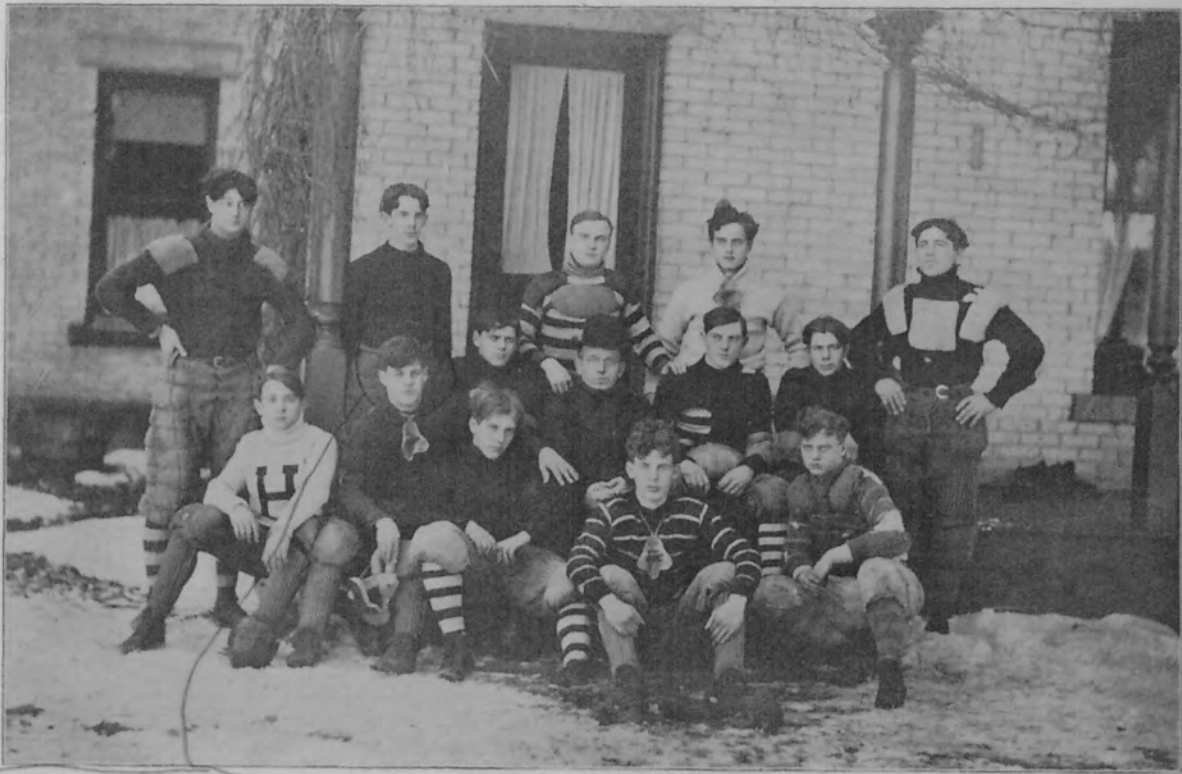
**F**AIR play and courtesy towards all is the motto of Howe School. All unfair tactics and discourteous treatment are discouraged and forbidden.

✦ ✦ ✦

**H**OWE SCHOOL now requires of all candidates for its teams a high standing in scholarship and a signed statement from each proving his amateur standing and ability.







VAL ELSTER  
LATER TEACHER  
AND COACH AT  
HOWE - IN THE  
'20s

SCHOOL FOOT BALL TEAM.

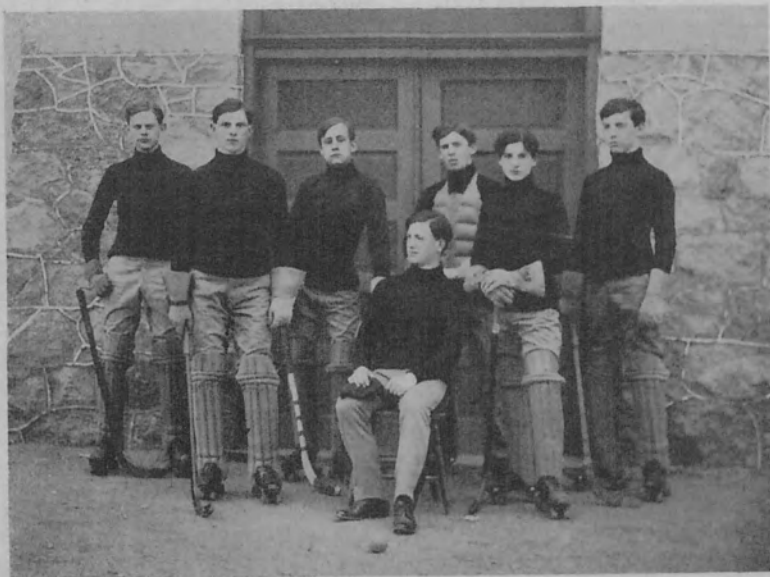


SCHOOL BASE BALL TEAM.



SCHOOL TRACK TEAM.

ATHLETICALLY the school is divided into two clubs, the Howe and the Knickerbacker. These two clubs are keen rivals and sometimes afford more entertainment than an interscholastic contest. Their rivalry extends throughout the year and furnishes contests in winter as in the spring or fall.



POLO TEAM.



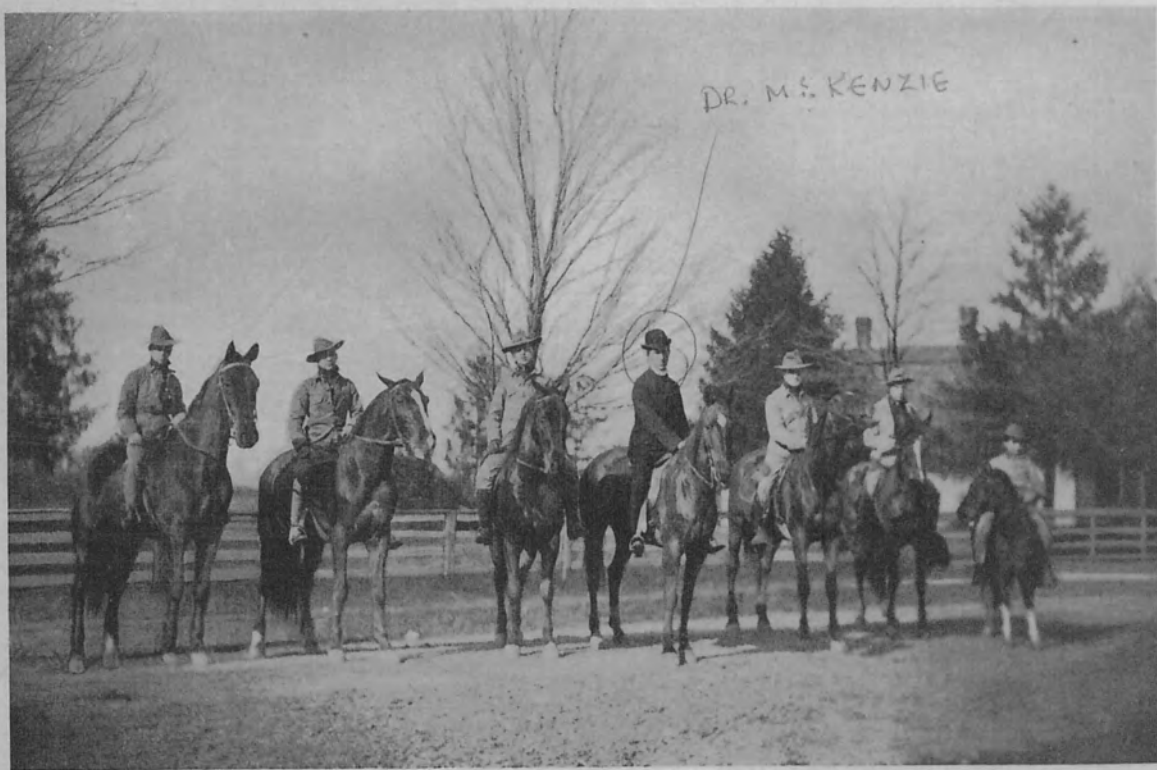
KNICKERBACKER CLUB BASE BALL TEAM.



HOWE CLUB BASE BALL TEAM.

GEORGE  
ARTHUR  
FISHER  
LATER HOWE  
QUARTERMASTER

ELSTER



RIDING CLUB.

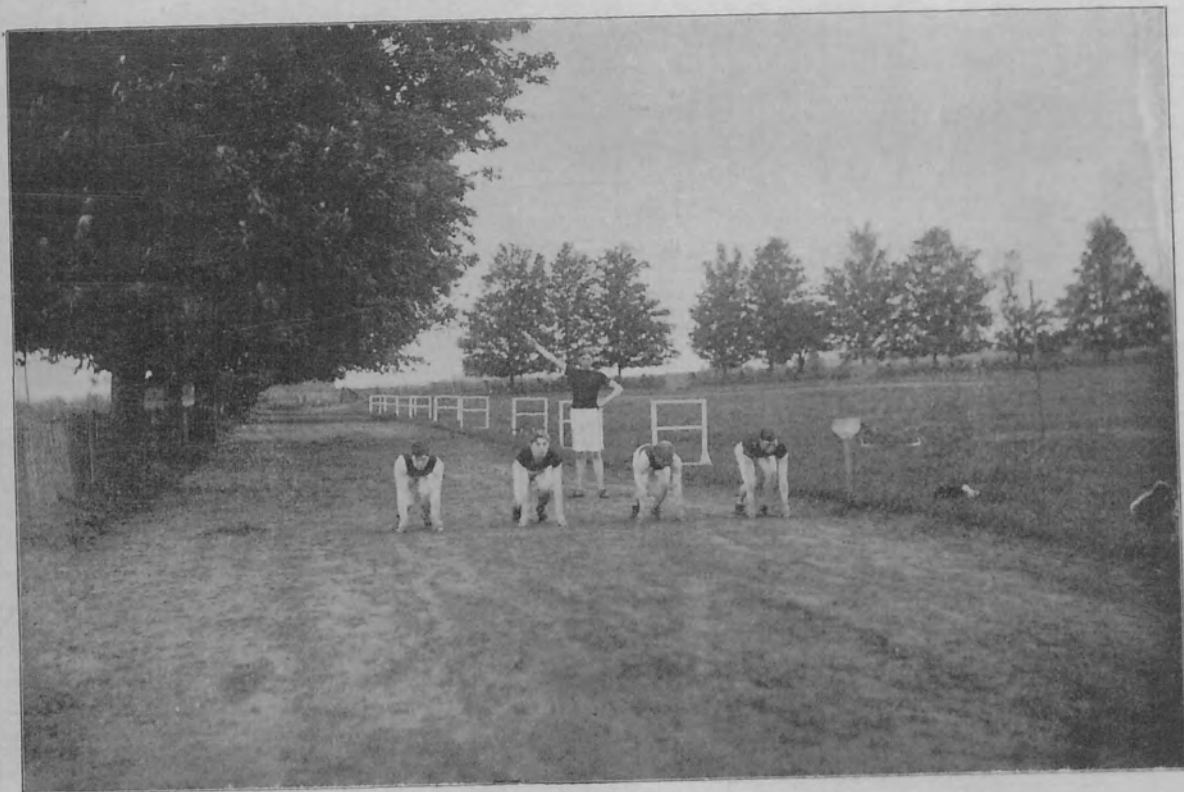




FENCING CLUB OUT-DOORS IN CLASS EXERCISE.



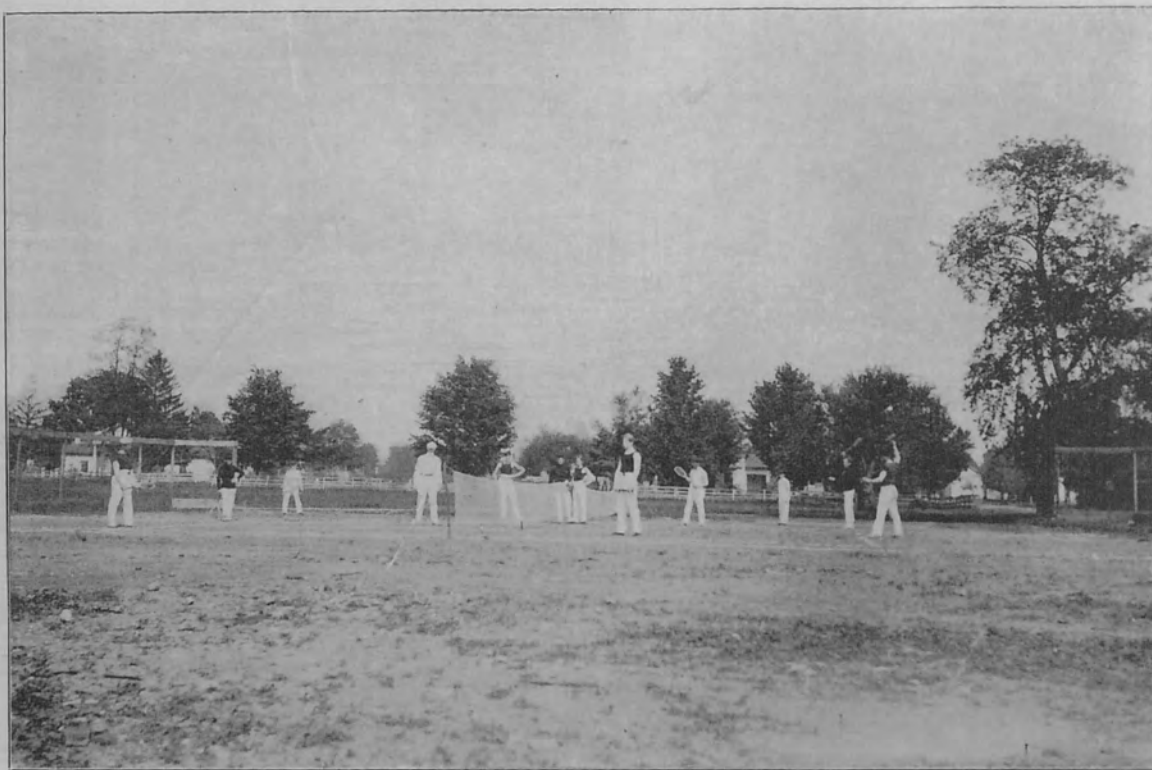
BOXING CLUB POSING FOR PICTURE.



THE ATHLETIC FIELD.

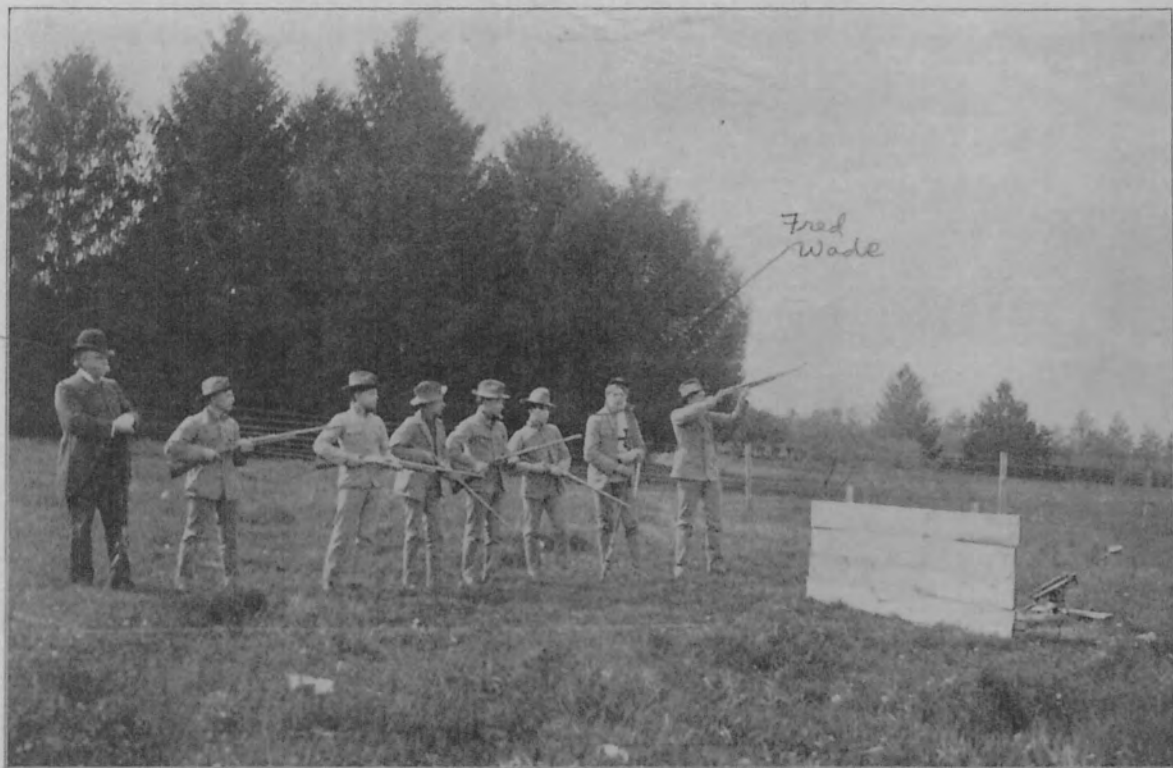


SEVERAL MEMBERS OF THE TRACK TEAM.



VIEW OF THE TENNIS COURTS.

CAPT.  
JULIAN  
— LATER —  
ACCOUNTANT  
FOR SCHOOL  
1915-20



Fred  
Wade

GUN CLUB AT PRACTICE.

MILITARY Schools afford many opportunities for out-door life. Drill, setting up exercises and athletics keep one out of doors two hours and more a day. The health and strength of every one increases and sickness is conspicuous by its absence.



MEMBER OF RIDING CLUB.



## SCHOOL RECORD ON TRACK.

	BEST RECORD OF 1903.	SCHOOL RECORD.	HOLDER OF RECORD.
50 YARDS DASH .....	.....	5 4-5 seconds.	Mitchell, .....1900 Nysewander ..... 1902
12 POUND SHOT PUT.....	36 feet 2 inches.	38 feet 2 inches.	Stuart..... 1902
100 YARDS DASH.....	10 4-5 seconds.	10 3-5 seconds.	Nysewander....1902
12 POUND HAMMER.....	120 feet 8 inches.	120 feet 8 inches.	Wagner.....1903
POLE VAULT.....	9 feet.	9 feet 4 inches.	King.....1902
RUNNING H J.....	5 feet 3¼ in.	5 feet 3¼ inches	Wade..... 1903
220 YARDS DASH.....	24 seconds.	24 seconds.	Bird.....1903
RUNNING B. J.....	20 feet 2¼ in.	20 feet 4 inches.	Ross.....1899
120 YARDS HURDLES.....	18 3-5 seconds.	18 2-5 seconds.	Wade.....1902
HALF-MILE RUN.....	2 min. 14½ sec.	2 min. 11 1-5 sec.	Wade.....1902
440 YARDS RUN.....	57 seconds.	57 seconds.	Gould } .....1903 Bird.. }
DISCUS.....	80 feet 2 inches.	80 feet 2 inches.	Floyd.....1903
STANDING B J.....	.....	10 feet 2 inches.	Baker.....1894
HALF-MILE RELAY.....	1 min. 39½ sec.	1 min. 39½ sec.	.....1903

## LITERARY ORGANIZATIONS.

---

ALPHA TAU SOCIETY, ORGANIZED 1900.

PRES. MR. O. M. ROTT.

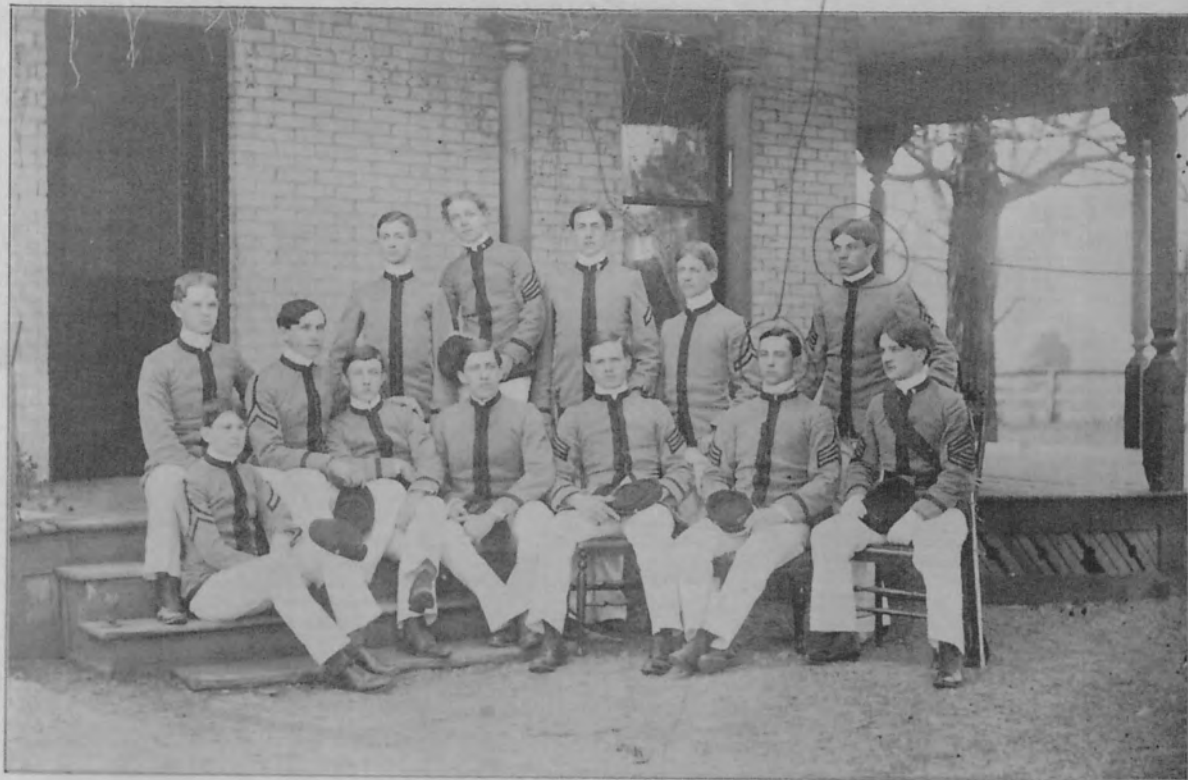
SEC. MR. G. V. McMAHAN.

PI OMEGA SOCIETY, ORGANIZED 1902.

PRES. MR. E. J. BIRD.

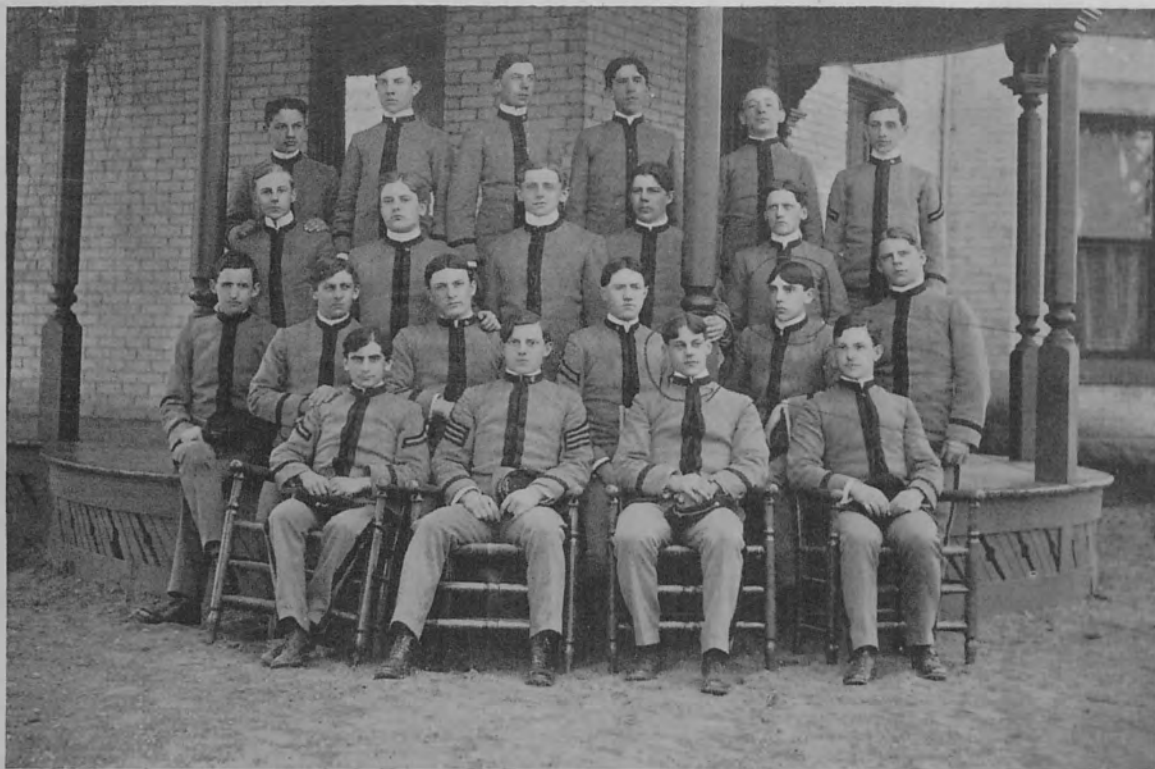
SEC. MR. M. A. HIRSH.

ROSCOE  
WADE



LAUKS  
KANDERS

ALPHA TAU LITERARY SOCIETY.



LITTLE

ELSTER

PI OMEGA LITERARY SOCIETY.

## SOCIAL ORGANIZATIONS.

---

HOWE CLUB of Indiana, Headquarters, Indianapolis. Pres., Mr. H. C. ADAMS, '95; Sec., Mr. F. D. AID, '99.

HARVARD CLUB, composed of Cadets who contemplate attending Harvard College. Pres. Mr. W. D. JONES.

MICHIGAN CLUB. Pres., Mr. W. M. ROSE; Sec., Mr. H. P. GILKEY.

OHIO CLUB. Pres., Mr. E. J. BIRD; Sec., Mr. O. M. ROTT.

INDIANAPOLIS CLUB. Pres., Mr. P. G. ELSTER; Sec., Mr. E. C. KRIEL.

CHICAGO CLUB. Pres., Mr. C. H. McNEIL; Sec., Mr. A. J. SEARS.



THE DRAMATIC CLUB IN "HIS EXCELLENCY THE GOVERNOR."



MR. MILLER  
DAUGHTER DOROTHY  
1st HOWE GIRL STUDENT  
DAY STUDENT



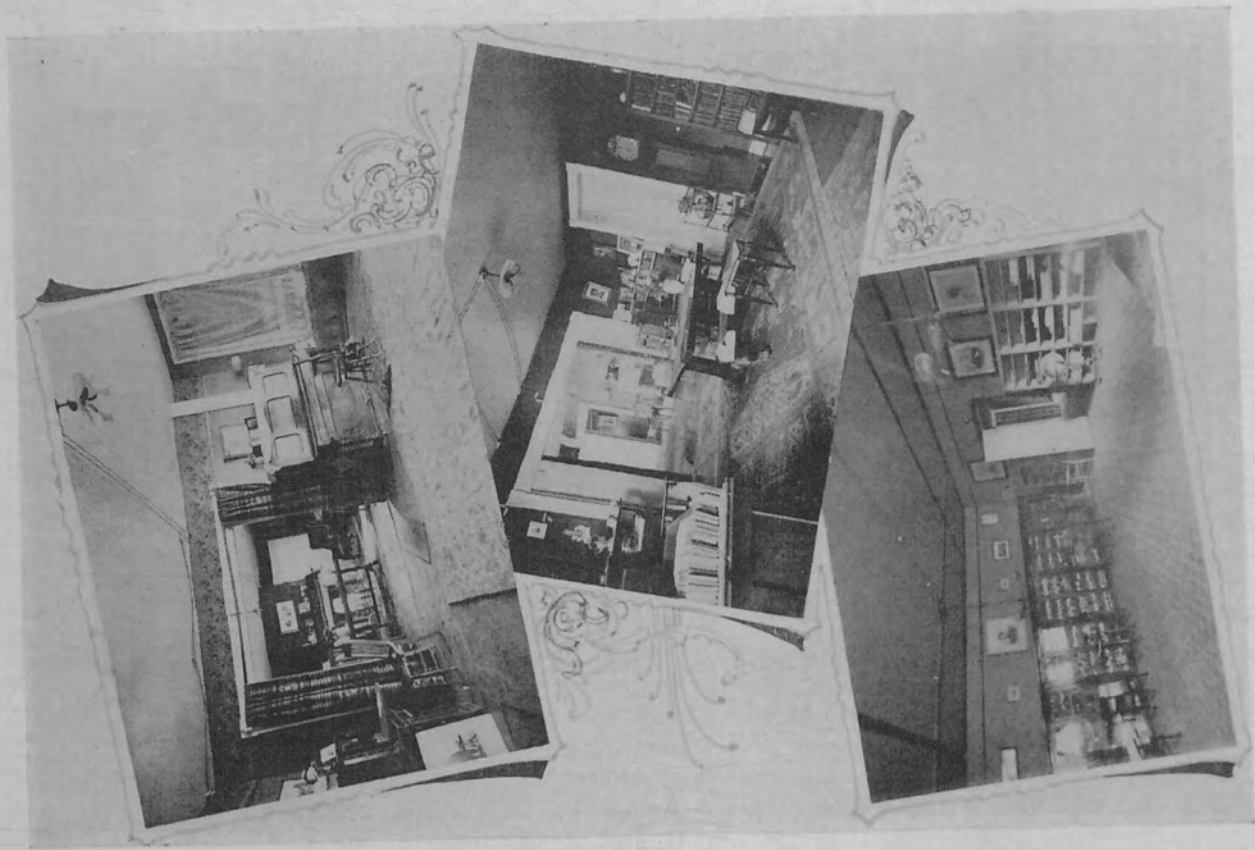
SCHOOL CADET BAND.



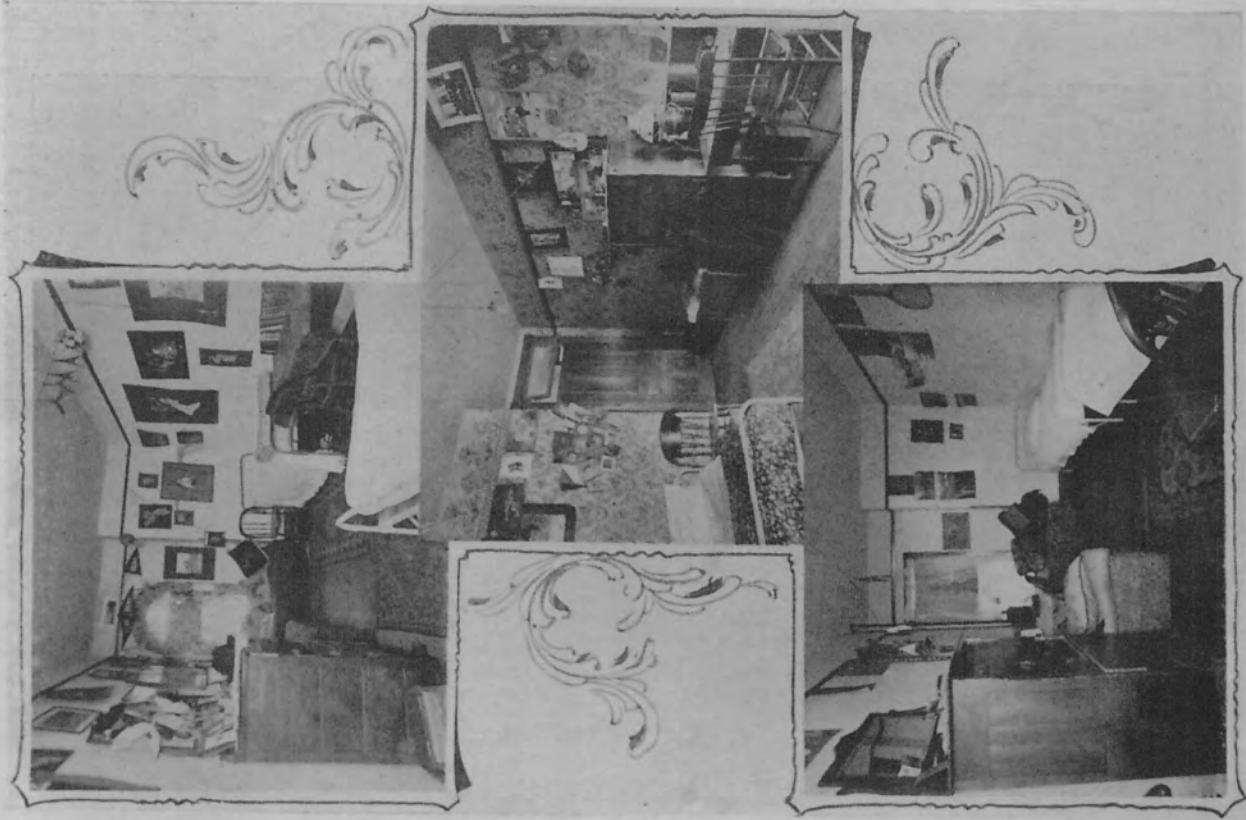
SCHOOL CADET ORCHESTRA.



SCHOOL MANDOLIN CLUB.



PARLORS AND LIBRARY.

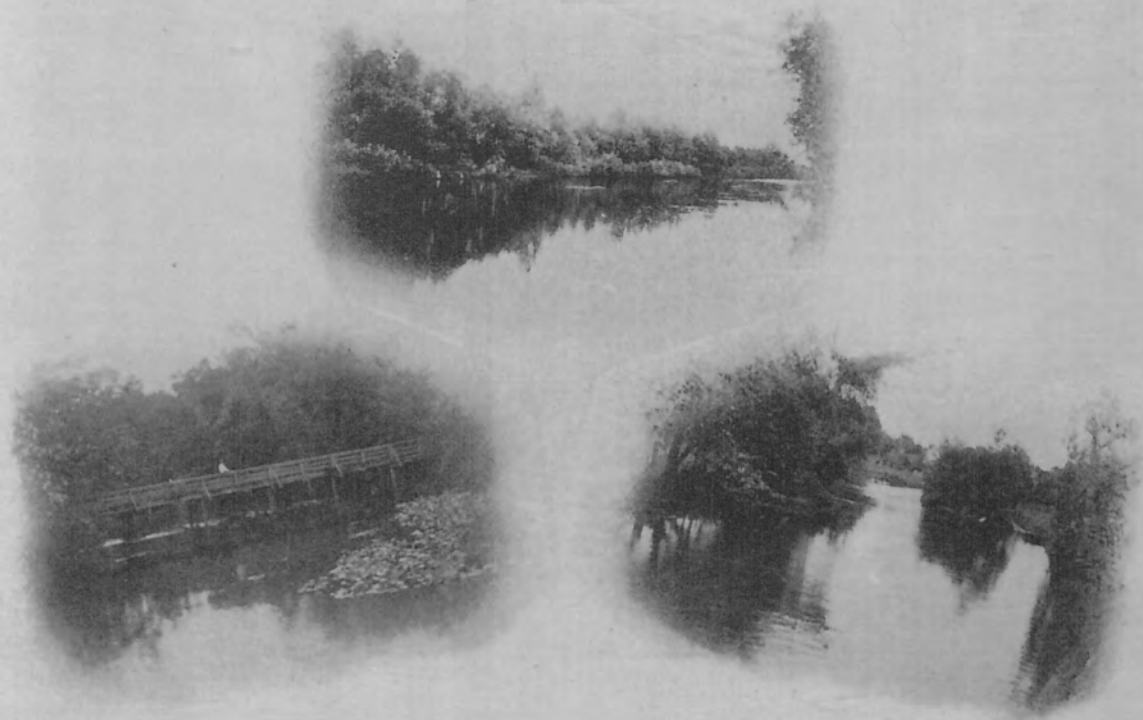


CADETS' ROOMS.



THE SCHOOL TALLY-HO.





VIEWS ON THE PICTURESQUE PIGEON RIVER.

THE life at Howe School is spent almost wholly within. It is independent of outside influences. The school is a thing apart. As a result its success in moulding lives and broadening minds is quick and very decisive.



A STREET IN LIMA.



SOME OTHER PHASES OF HOWE SCHOOL LIFE.



VIEWS ABOUT MRS. HOWE'S GROUNDS.



SOUTH NINNESCAH LAKE.

THE school conducts a summer school at its Club House on the south shore of South Ninnescah Lake, which is within a convenient distance of Lima. Cadets can make up failures or bring themselves up to full class standing.



THE CLUB HOUSE ON SOUTH NINNESCAH LAKE.

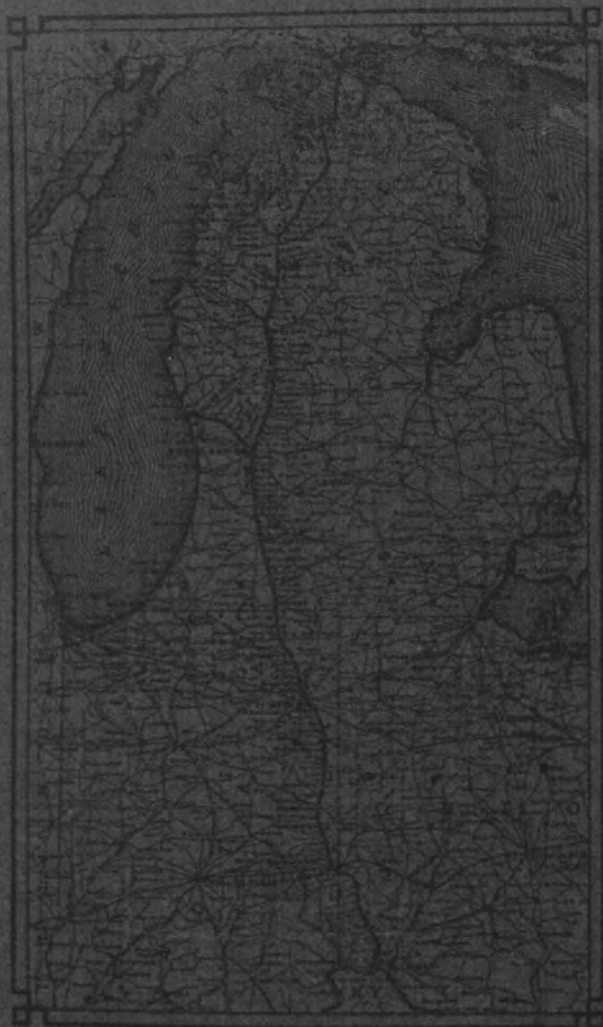




SUMMER SCHOOL CAMP

THE Lower School has exceptional advantages. It includes only boys from ten to fourteen years of age. It is located nearly a quarter of a mile from the main building and has a distinct existence of its own. It enjoys a home life that is of real Christian character and contains influences that should be a great blessing to any boy.





## LIMA, IND.

IS LOCATED NEAR  
THE MICHIGAN  
STATE LINE  
ON THE

Grand Rapids & Indiana  
Railroad

THE ROUTE OF  
FAST TRAINS  
TO THE

SUMMER RESORTS  
OF MICHIGAN

Send for Descriptive  
Matter to

C. L. LOCKWOOD  
G. P. & T. A.  
GRAND RAPIDS,  
MICH.